



integrative
psychiatry

WHY JOIN US?

7 REASONS WHY YOU SHOULD JOIN US



MAKE A HEALTHY INCOME

You have full control of your income! The more patients you see, the more you make. The average doctor working 4 days a week is averaging \$405,000 annually. On average, Psychiatrists working full time, make \$250,000.



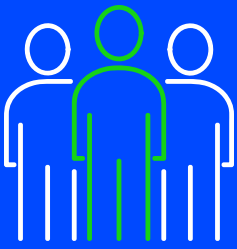
WORK AUTONOMY

At integrative psychiatry you get to choose and **customize your work schedule** however you want. You want to work 2 days a week, no problem! Our goal is for you to work efficiently while doing what you love.



WORK LOCALLY

All of our contracted facilities have been meticulously picked to make sure that no matter where you live, you will be **within 25 miles of your residence.**



"IMPROVE MORE LIVES"

This business was designed by doctors, for doctors! Our goal has always been to improve more lives, and allow our doctors to step away from the day-to-day clerical and administrative work, and **get back to doing what they love!**



IN-HOUSE SUPPORT

We offer our doctors ongoing support with billing inquiries, administrative work, technical support, and much more. We also provide our doctors with continuous field related content and tons of resources to help them grow!



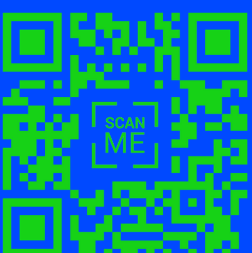
INTEGRATIVE DASHBOARD

We have created a **proprietary custom portal for all of our doctors.** You get full access to weekly journal clubs, advanced forums, quick communication from our in-house support, and so much more, all a click away!



PHYSIATRIST OWNED

Our founders knew the struggle of building their own practice, scheduling patients, managing a business, and making time for their family. It became harder to continue doing what they love, and that's where **integrative psychiatry was born.**



CHECK YOUR SALARY!

Test out our custom **salary calculator** to see how much you can make when joining us!
iPhone Users: Open your Camera app and hover your camera over the QR Code. A link should appear on the top of your screen. Click it!